



VistaFA2 Multimodal Iris & Face Camera

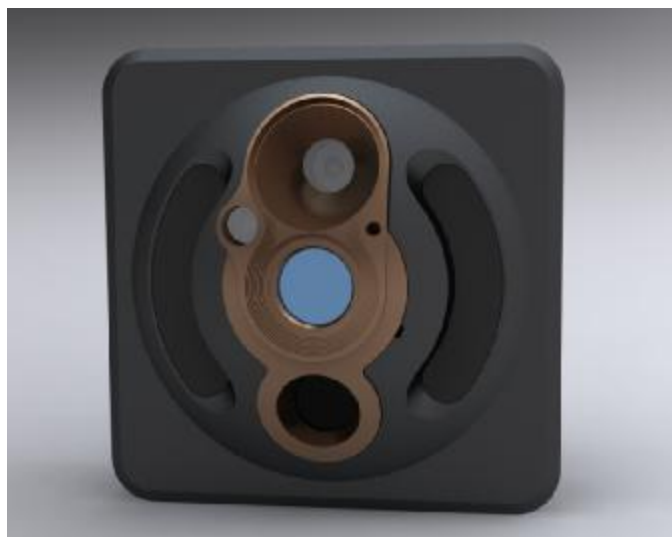
High Quality Biometric Imaging Solution For Tethered and Embedded Applications

Features

- Highest Quality Standard compatible Iris & Face Imaging solution
- Based on Vista Imaging's powerful & proven ViCAM®III Digital Imaging Engine
- Standard USB 2.0 interface
- Iris Images are ISO/IEC 19794-6 compliant
- Face Images are ISO/IEC 19794-5 compliant
- Tested with today's leading biometric algorithms
- Multi wavelength IR illumination for superior iris images in all environments, meets international Eye Safety Requirements
- Integrated flash for face captures in darker environments
- Intelligent distance sensing technology provides auto acquisition for iris captures
- Integrated cold mirror & RGB Tricolor LED provide easy self alignment feedback for iris
- Integrated microphone & speaker provides 16-khz 16-bit audio I/O
- Windows CE, XP & Vista and Linux OS support
- Full featured proven SDKs makes integration with custom applications quick & easy
- VistaFA2 is very comfortable in the user's hand or easily mounts to tripods with included tripod mount
- VistaFA2's small size of 94mm wide by 94mm tall by 54mm deep, and weighs only 180 grams

Applications

- Portable & Desktop Multimodal Biometric Solution
- Physical & Logical Access markets
- Stationary and portable biometric kiosks
- Border Control
- Financial & Banking security
- Law Enforcement



Overview

Vista Imaging's VistaFA2 is a complete multimodal biometric peripheral for Windows CE, XP & Vista and Linux OS platforms. The VistaFA2 uses the highest quality state of the art digital imaging technology to provide a superior biometric imaging solution.

VistaFA2's iris capturing features include top of the line CMOS sensor for ISO/IEC 19794-6 compliant VGA images (640x480), custom optics, multi wavelength IR illumination, tri-color RGB LED indicators, proprietary distance sensing and accurate focus analysis providing auto acquire capabilities. Taken together these features provide an iris imaging solution which results in clearer images in nearly all lighting conditions.

VistaFA2's face capturing features include 3MP CMOS images sensor (2048 x 1536), special optics for clearer images, and integrated flash for darker environments, providing the highest quality ISO/IEC 19794-5 compliant image every time.

VistaFA2 provides audio input and optional output for superior audio I/O features.

Contact us with your specific requirements to see how easily we can solve your biometric imaging needs.

Smart Sensors
Tools for Iris Recognition Engines

Authorized Distributor

Tel.: +44 1225 388690

Fax +44 1225 388660

E-mail: info@smartsensors.co.uk

Website: <http://www.smartsensors.co.uk>

Smart Sensors Ltd.
The Innovation Centre, Broad Quay, BATH BA1 1UD United Kingdom